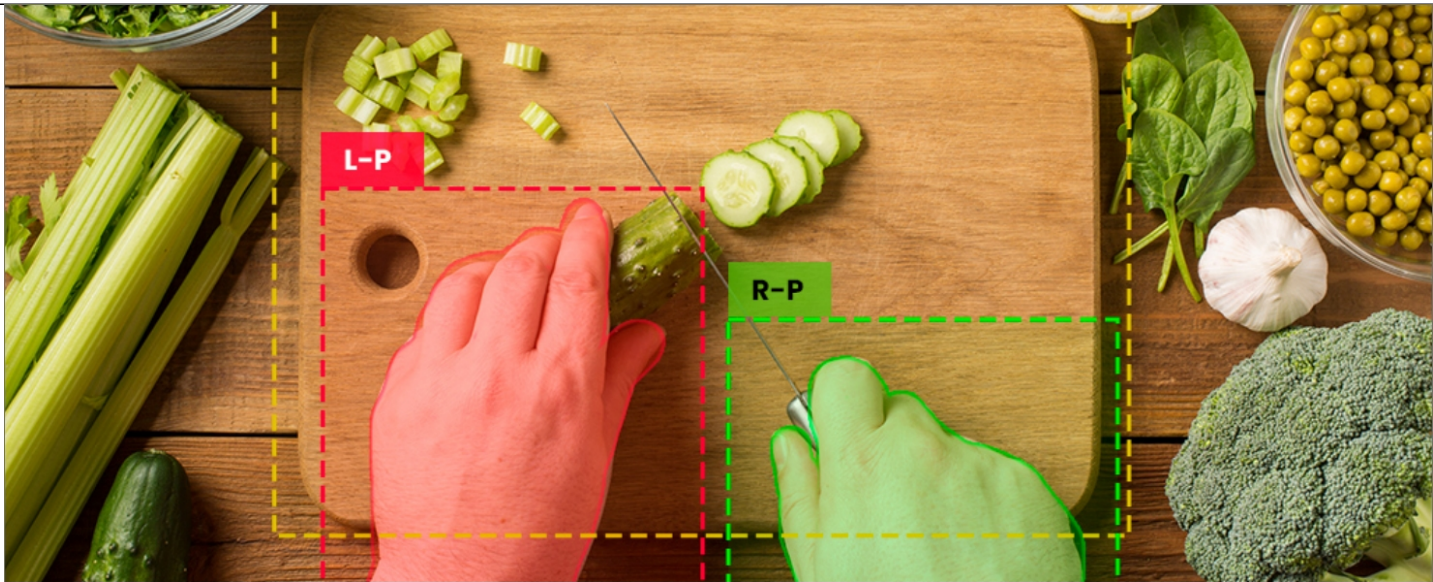


---

??????????

??????????

???????????????? AR ?????????????????



Egocentric data is particularly useful in augmented reality (AR) because it allows the system to create a personalized experience for the user that adapts to their specific perspective and context. For example, an AR system could use egocentric data from a head-mounted camera to display virtual annotations or instructions that are aligned with the user's view of a real-world object or scene.

Our POV article explains more about egocentric data.

- -
- -
- -
- -
- -

